



# SAHIL

श्रेष्ठ, सर्वत्र, सर्वदा

SAHIL ELEGANT

*Redefining Luxury Living*

[www.sahilgroup.co.in](http://www.sahilgroup.co.in)



# SAHIL ELEGANT

*Luxury Living*







## ABOUT US

Sahil Group continues to lead the way in innovation, bringing modern construction technology and cutting-edge design to every landmark it creates. With a commitment to unmatched quality, every project under our banner is a reflection of excellence and trust. Our core philosophy—"deliver on time, deliver as promised, and design with purpose"—drives everything we do.

---

Now imagine living above the ordinary. A home that blends sophistication with scale, and elevates every aspect of urban living. Introducing *"Sahil Elegant"*—an ultra-premium high-rise marvel designed for those who aspire for nothing less than iconic. This fully integrated gated community isn't just a residence, it's an experience of elevated lifestyle, architectural brilliance, and exclusive luxury.

*Luxury Living*





## ABOUT US

Rising from a 3-level podium with double-height showrooms on the ground floor and an 18-feet high podium amenities floor, \*Sahil Elegant\* soars up to 22 majestic floors. Starting from the 7th floor, the tower features 16 exclusive residential levels, each comprising 4 spacious flats: 2 expansive single-height residences of 4350 sq. ft., and 2 palatial duplex homes of 5600 and 5800 sq. ft., occupying the corners for unmatched privacy and views

---

Sahil Elegant offers the best of all worlds—thoughtful design, personal space, privacy, and premium amenities. From the indulgence of a luxurious podium lifestyle to the comfort of grand duplex living, it's a rare blend of independence and community. Live where elegance meets exclusivity.

Luxury Living









SWIMMING POOL



PERGOLA SEATING



POOLSIDE CAFE



BARBAQUE LOUNGE



JACUZZI



REFLEXOLOGY PATH



VERTICAL GREEN WALL



GARDEN BENCHES



YOGA & MEDITATION  
CENTRE



SKATING RINK



MULTIPURPOSE LAWN



CHILDREN PLAY AREA



JOGGING TRACK



WATER BODY



Where *elegance*  
finds its address





Dive into *luxury*,  
live the unseen





Where every *meal*  
becomes a celebration





A *space* that reflects  
pure indulgence





Wellness *designed*  
for you





All efforts to keep you  
*safe while* keeping all  
of your anxieties  
At home

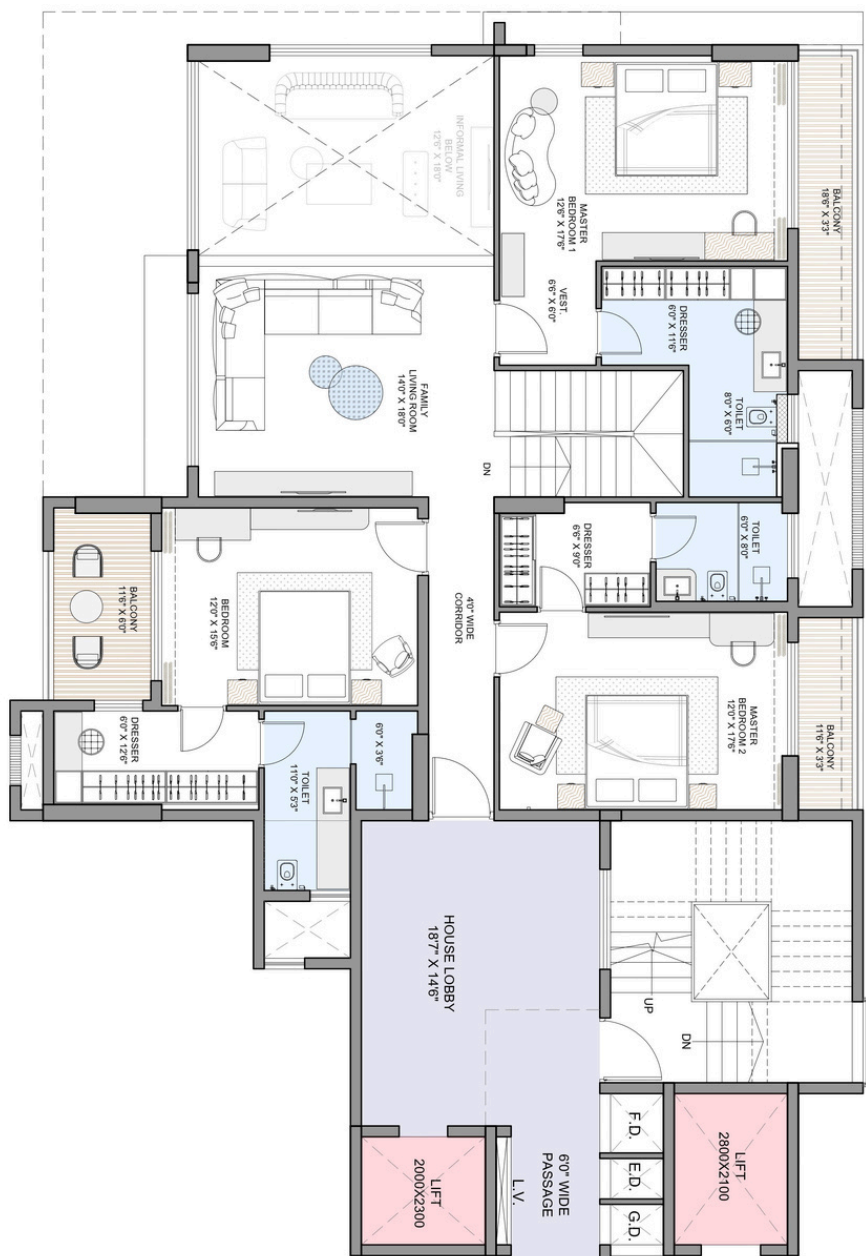


**Floor Plan Details:**

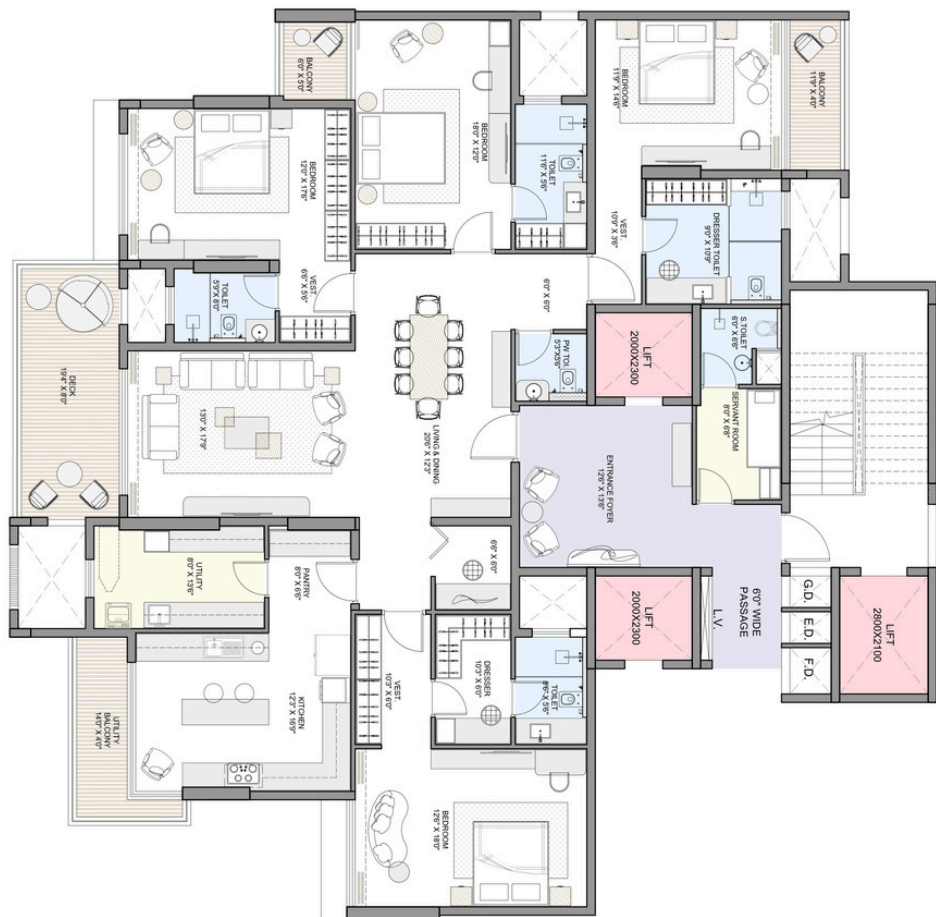
- Living and Dining:** 18'7" X 20'5"
- Kitchen:** 12'6" X 10'9"
- Formal Living:** 12'5" X 6'0"
- Master Bedroom:** 12'0" X 11'7"
- Dresser:** 14'6" X 9'9"
- Toilet:** 6'0" X 9'9"
- Utility:** 6'9" X 11'7"
- Deck:** 20'9" X 10'0"
- House Lobby:** 18'7" X 14'6"
- Lift:** 20'0" X 2'30"
- Passage:** 6'0" WIDE
- Stairs:** Up, Down



# Duplex Flat 1 Typical Upper Floor

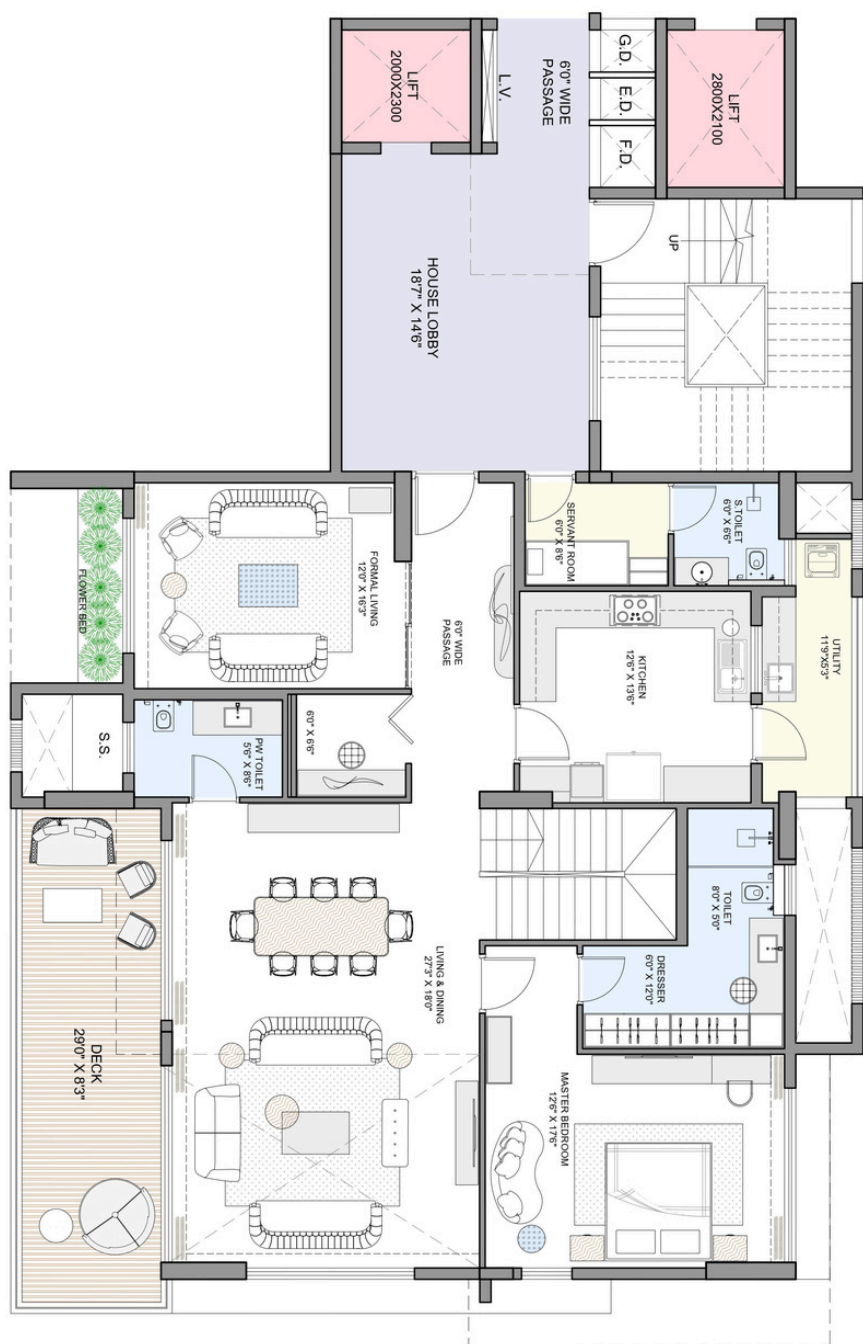








# Duplex Flat 2 Typical Lower Floor



# Duplex Flat 2 Typical Upper Floor







# AMENITIES

## Project Highlights

- Iconic high-rise design with luxurious duplex and single-height apartments.
- Corner duplex apartments with expansive views, three sides open and complete privacy.
- 18 ft. high podium floor with resort-style lifestyle amenities.
- Double-height showrooms at ground floor for premium commercial value.
- 3-level podium parking for residents and visitors.
- Spacious single-height flats (4350 sq. ft.) and duplexes (5600 & 5800 sq. ft.)
- Integrated high-end gated community with refined living standards.

---

## Building Features

- High-speed elevators, including service elevators, are complemented with an Auto Rescue Device (ARD)
- Multi-level covered car parking and separate visitor's parking from a security perspective.
- Washroom facility at podium level.
- Eco-friendly - Rainwater harvesting system.
- 24 hr common area backup.
- Kid's Pool, Swimming Pool, Jacuzzi, Poolside Café, Yoga & Meditation Centre.
- Multipurpose Lawn, Jogging Track, Vertical Green Wall, Water Body
- Children's Play Area, Skating Rink, Reflexology Path, Pergola Seating, Garden Benches
- Garbage chute.

---

## Specification

All the flats can be customized by owners according to their requirements and needs. It is subject to approval from the developer! We have a demo flat done up with interior to help you visualize the house of your dreams.



# Contact Us



## DEVELOPER

Sahil Group Pvt. Ltd



## SITE ADDRESS

Scheme number 134 Star square MR 10 road, Indore - 452010



## HEAD OFFICE

403, 404 Sahil Infinite, Shivneri Sahil Empire, Scheme No 140, Opoosite Agrawal Public School, Indore - 452016



## MOBILE NUMBER

+91 9179755548



## DISCLAIMER

The brochure is only for illustration and private circulation purpose. All the images, visuals, information contained herein are purely creative/artistic concepts and may not be actual representation of any product or amenities offered. No information given in the brochure creates a warranty or expands the scope of warranty that cannot be disclaimed under applicable law. For private circulation only. Other conditions apply. You are requested to directly verify the all the details of the and aspects of any proposed booking of units/ premises, directly with the sales team.

[www.sahilgroup.co.in](http://www.sahilgroup.co.in)

